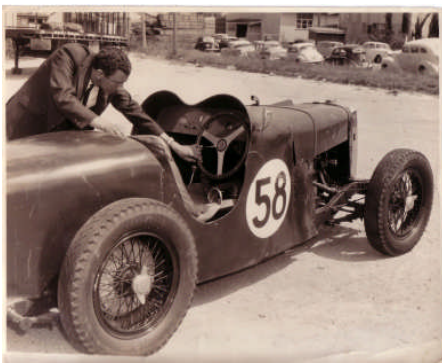


The Murphy P type

Brian Tebble's nephew, Andrew Willesden, recently made contact with the Club because he has a number of Brian's old photos and thought they would be of interest to us. Amongst those photos were the two below. This was all rather timely considering the current display on the history of the hillclimb in Redland Museum and the fact that Rod Murphy visited the Clubrooms recently and talked about the P Type pictured which was raced in AGPs by his father, Les. The photos of Brian and the P type were taken in February 1966 when the car was brought to Queensland for a parade of historic MGs at Lakeside at the Australian Grand Prix meeting held on Feb 20th.



Brian with the P type

Telegraph article dated
9/2/66

Telegraph 9/2/66

↑ M G Car Club president Mr. Brian Tebble, anxiously watched the unloading of one of Australia's most historic sports cars—the MG P Type, which won the Australian Grand Prix in 1935 and 1937. The MG, which still competes in hill climbs, completed the 200 mile race over a rectangular, 6.6 mile dirt road circuit, at an average speed of 88.4 mph. The car is owned by Melbourne school teacher, Mr. Wally Magilton. It will lead a parade of veteran MG racing cars at the Australian Grand Prix at Lakeside on Sunday, February 20.

RSL CHIEF
TOOWOOMBA: Mr. Norman Hackwood has been elected president of the Warwick sub-branch of the Returned Services League in place of Mr. W. H. Holberg.