

MG NAT MEET 2025 BULLETIN 4



Thank you again for registering for the 2025 MG National Meeting.

This Bulletin includes information about the closing date for registration, official regalia and the Theme Night, locations of major National Meeting events, the motorkhana patterns, details of the photographic competition and rocker cover racing.

Closing Date for Registrations

We have reached our capacity of 320 Registrants and there is now a waiting list. Registration formally closes on 19 March. If you wish to join the waiting list please contact the Registrar, Jan Rattray, at natmeet2025.registrar@mgcc.com.au

Regalia

Don't forget to order your regalia now. <https://vic.mgcc.com.au/online-shop?category=all>
Orders will definitely close on 19 March 2025

Theme Night

Saturday night of the Nat Meet will be theme night at Albury's Commercial Club. The theme for this year will be **Flappers, Gangsters and All That Jazz** - celebrating a time when the only MG you could buy was a new one, when clothes were classy and the music was hot. So let's celebrate the 1920's in style.

Competition (optional)

Competitors registered in the Sprint and Motorkhana events will receive a Self-Scrutiny - Statement of Vehicle Compliance form for completion and to bring to Registration.

Locations of Major Events

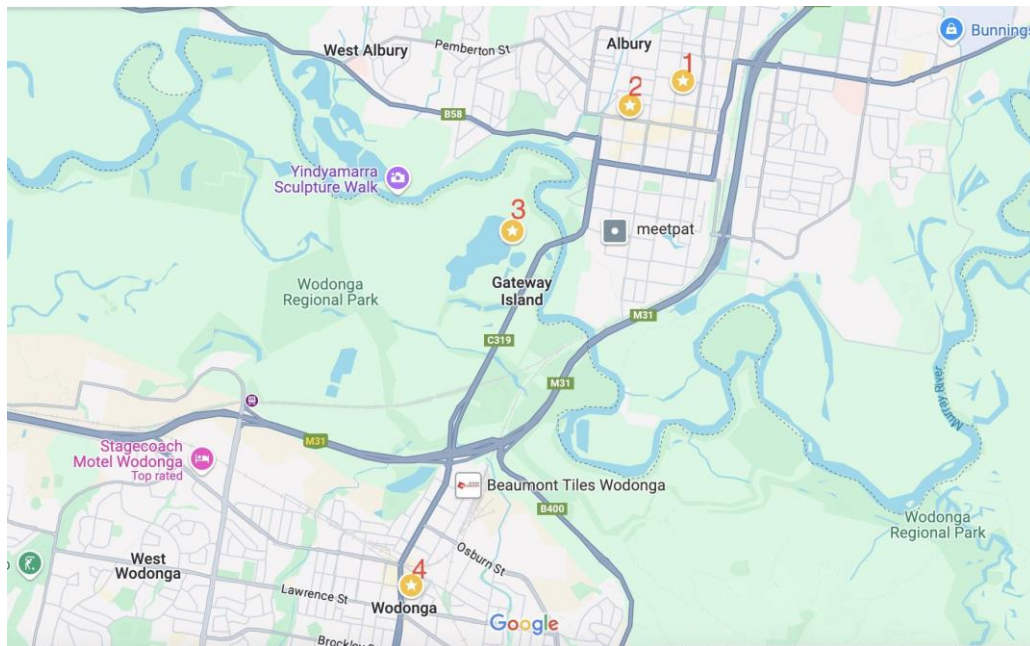
The following maps show the locations for the major events during the National Meeting. Starting points for the Kimber and Discovery Runs will be provided at the commencement of the Meeting.

1 - SS&A Club, 570-582 Olive Street Albury. Location for the Presentation Dinner, Farewell Breakfast and Delegates Meeting.

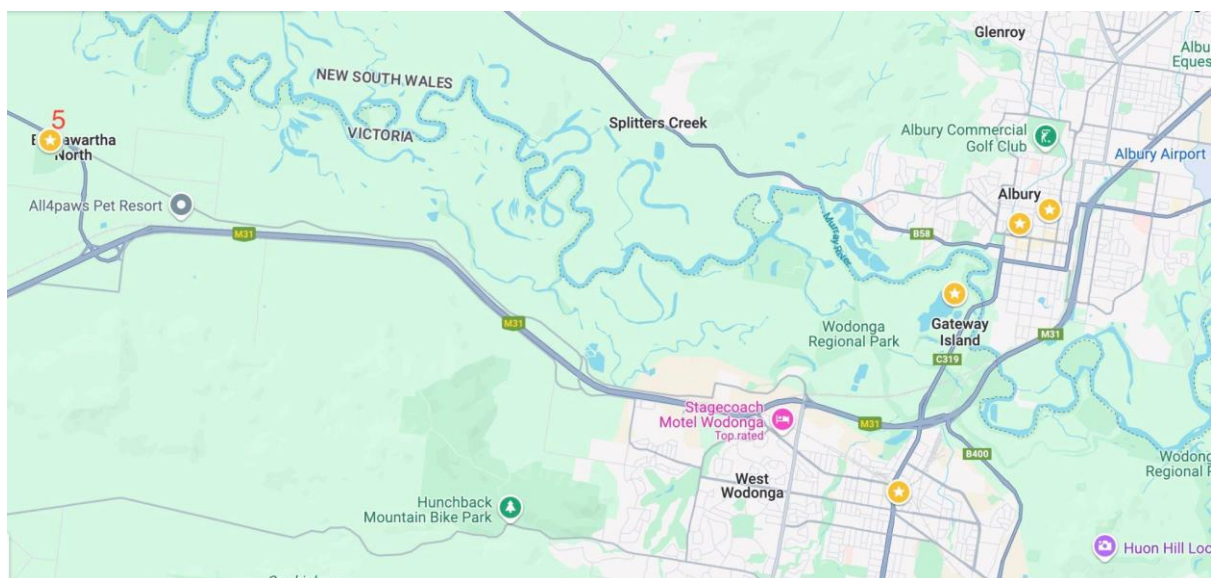
2 - Commercial Club, 618 Dean Street Albury. Location for the Theme Night Dinner.

3 - Gateway Lakes. Location for the National Concours.

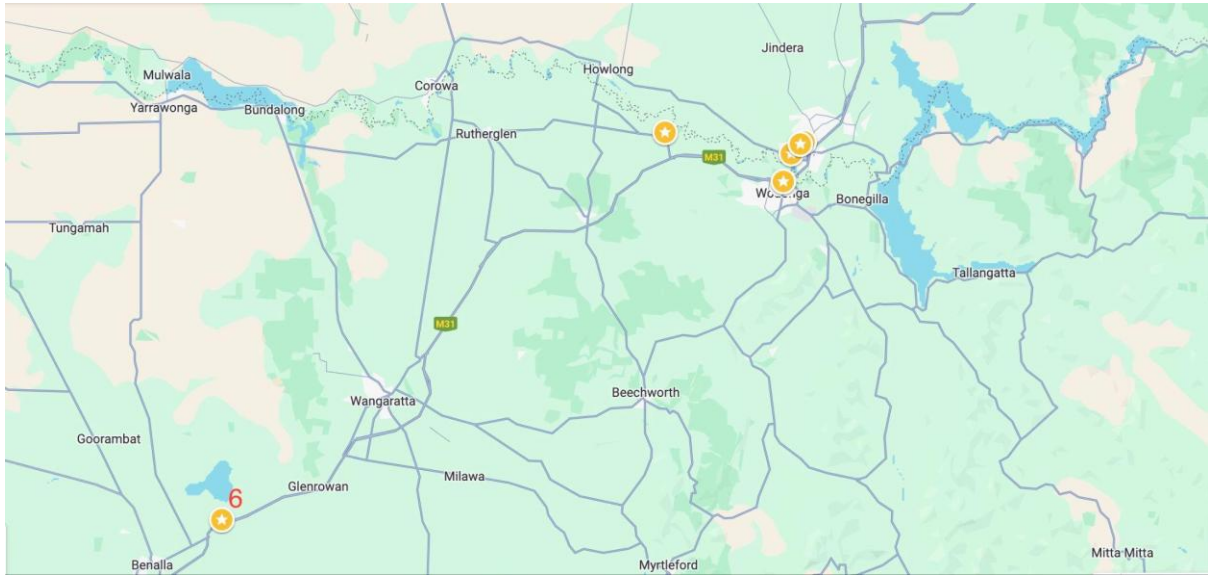
4 - The Cube, 118 Hovell Street Wodonga. Location for Registration, Scrutineering, Noggin 'N' Natter and Rocker Cover Racing.



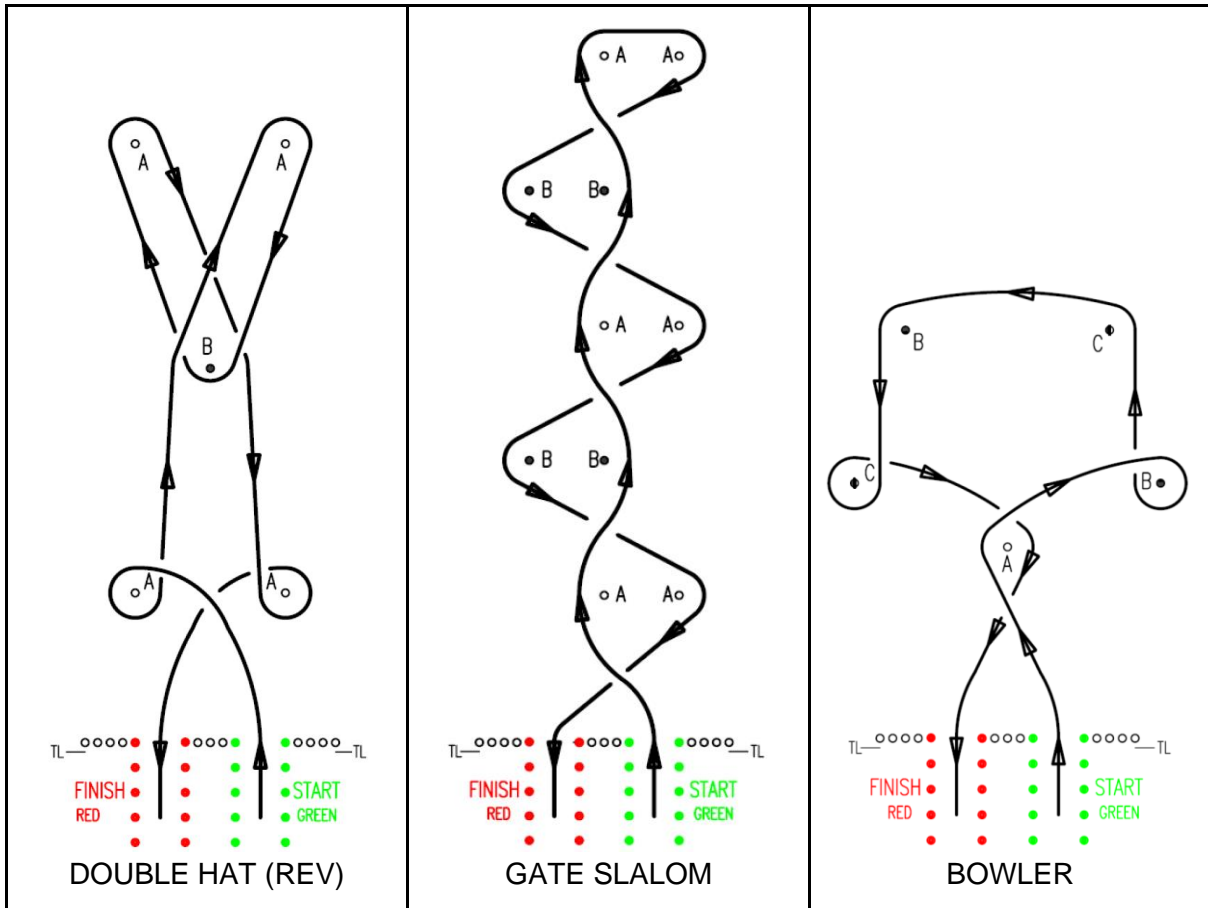
5 - Wodonga TAFE Driver Training Complex, The Logic Centre, Albertson Road Barnawartha North. Location for the Sprint Event.



6 - Winton Raceway, Huntley Street Winton. Location for the Motorkhana.



Motorkhana Courses



National Meeting Photographic Competition Rules

- i) Photographs entered in this competition are judged in the following categories:
 - * Best Action Photograph
 - * Best Still Photograph
 - * Best Novelty Photograph
 - * Best Digital Photograph - this means “substantially digitally altered from the original.”
- ii) Photographs entered in previous National Meetings are not eligible.
- iii) Photographs must be the registrant's own work and taken within the last two years. The entrant's name and details should be on the back of the entry.
- iv) The maximum size of any photograph is A4 with the maximum size of the mount 16 x 12 inches (400 x 300 mm).

Rocker Cover Race Guidelines

The Racers

- a) The racers shall have no power source. All motive force is provided by gravity.
- b) Racers shall be based on a rocker cover from any MG or a rocker/cam cover of the same silhouette.

- c) The racer shall be no more than 40mm longer than the rocker/cam cover excluding wheels.
- d) Wheel track shall be no more than 200mm.
- e) Racers shall have four wheels, no more than 155 mm diameter.
- f) The maximum racer weight to be no more than 3 kg.
- g) Racers will be scrutineered for compliance to the above clauses and may result in disqualification.

The Course

- a) The course shall consist of a launch incline of 1.5m long, followed by a level run of 6m.
- b) The launch incline shall be divided into two lanes, each 450mm wide & shall be 600mm high at the rearmost part & level with the course at the front edge. The front edge shall be bevelled to provide a smooth transition from incline to run-out area.
- c) The official starting line shall be 600mm from the rear edge of the ramp. A mechanised starting gate may be employed.
- d) The run-out section of the course shall consist of two clearly marked 900mm wide lanes.
- e) The finish line shall be marked 6m from the front edge of the launch incline.

The Races

- a) The competition will be conducted in **best of three** heats of two racers at a time.
- b) The racers are to be launched with their leading edge on the starting line. The first racer to have the leading edge cross the finish line is the winner. If neither racer makes it to the finish line, the racer going the furthest in its lane wins. If the wheels of the racer should touch or cross over the lane markers the racer shall be disqualified. The remaining racer automatically becomes the winner.
- c) Winning racers will advance to the next round until all are eliminated except one racer, which will be the outright winner.

That's all for Bulletin 4.

See you in Albury-Wodonga!

Tony Lupton
2025 MG National Meeting Director